

手紙 ～拝啓 十五の君へ～

Tegami

- Haikai Juugo no Kimi e -

comp. by Angela Aki
Tohru Kanata

♪=120

Piccolo *mf*

1st & 2nd Flutes *mf*

Oboe *mf*

Bassoon *mf*

Clarinet in Eb *mf*

1st Clarinet in Bb *mf*

2nd Clarinet in Bb *mf*

3rd Clarinet in Bb *mf*

Alto Clarinet in Eb *mf*

Bass Clarinet in Bb *mf*

1st Alto Saxophone in Eb *mf*

2nd Alto Saxophone in Eb *mf*

Tenor Saxophone in Bb *mf*

Baritone Saxophone in Eb *mf*

♪=120

1st Trumpet in Bb *mf*

2nd&3rd Trumpets in Bb *mf*

1st & 2nd Horns in F *mf*

3rd & 4th Horns in F *mf*

1st&2nd Trombones *mf*

3rd Trombone *mf*

Euphonium *mf*

Tuba *mf*

Contrabass *mf*

♪=120

pende

9 **A**

Picc.

1&2 Fls.

Ob. *Solo* *mp*

Bsn. *mp*

E♭ Cl.

1 Cl. *mp*

2 Cl. *mp*

3 Cl. *mp*

A. Cl. *mp*

B. Cl. *mp*

1 A. Sax. *mp* *Cue Oboe*

2 A. Sax.

T. Sax.

B. Sax.

A

1 Trp.

2&3 Trps.

1&2 Hrns.

3&4 Hrns.

1&2 Trbs.

3 Trb.

Euph.

Tuba

C. B.

A

Xylo.

17 **B**

Picc.

1&2 Fls. *mp*

Ob.

Bsn. *mp*

E♭ Cl.

1 Cl.

2 Cl.

3 Cl.

A.Cl.

B.Cl.

1 A.Sax. *mp*

2 A.Sax. *mp*

T.Sax. *mp*

B.Sax. *mp*

B

1 Trp. *mp*

2&3 Trps. *mp*

1&2 Hrns. *mp*

3&4 Hrns. *mp*

1&2 Trbs.

3 Trb.

Euph. *mp*

Tuba

C.B. *mp*

B

Xylo.

25 **C**

Picc.

1&2 Fls.

Ob.

Bsn.

E♭ Cl.

1 Cl.

2 Cl.

3 Cl.

A. Cl.

B. Cl.

1 A. Sax.

2 A. Sax.

T. Sax.

B. Sax.

C

1 Trp.

2&3 Trps.

1&2 Hrns.

3&4 Hrns.

1&2 Trbs.

3 Trb.

Euph.

Tuba

C. B.

C

Xylo.

33

D %

Picc. *f*

1&2 Fls. *f*

Ob. *f*

Bsn. *mf* *f*

E♭ Cl. *f*

1 Cl. *f*

2 Cl. *f*

3 Cl. *f*

A. Cl. *mf* *f*

B. Cl. *mf* *f*

1 A. Sax. *f*

2 A. Sax. *f*

T. Sax. *mf* *f*

B. Sax. *mf* *f*

D %

1 Trp. *f*

2&3 Trps. *f*

1&2 Hrns. *mf* *f*

3&4 Hrns. *mf* *f*

1&2 Trbs. *mf* *f*

3 Trb. *f*

Euph. *mf* *f*

Tuba *mf*

C. B. *f*

D %

Xylo.

41

Picc. *f*

1&2 Fls. *f*

Ob.

Bsn.

E♭ Cl.

1 Cl. *mf*

2 Cl. *mf*

3 Cl. *mf*

A. Cl. *mf*

B. Cl. *mf*

1 A. Sax.

2 A. Sax.

T. Sax.

B. Sax.

1 Trp. *f*

2&3 Trps. *f*

1&2 Hrns. *f*

3&4 Hrns. *f*

1&2 Trbs. *f*

3 Trb.

Euph. *mf* *f*

Tuba *mf*

C. B.

Xylo.

49 $\text{to } \Phi$ [1.] [2.] [E]

Picc. *mf*

1&2 Fls. *mf*

Ob. *mf*

Bsn. *f*

Eb Cl. *mf* *f*

1 Cl. *mf*

2 Cl. *mf*

3 Cl. *mf*

A.Cl. *f*

B.Cl. *f*

1 A.Sax. *mp*

2 A.Sax. *mp* *f*

T.Sax. *mp* *f*

B.Sax. *mp* *f*

$\text{to } \Phi$ [1.] *f*

1 Trp. *f*

2&3 Trps. *f*

1&2 Hrns. *f* *f*

3&4 Hrns. *f* *f* *a2*

1&2 Trbs. *f*

3 Trb. *f*

Euph. *f* *f*

Tuba *f* *f*

C.B. *f* *f*

$\text{to } \Phi$ [1.] [2.] [E]

f *f*

mf

Xylo. *f*

56

Picc. *mf*

1&2 Fls. *mf*

Ob. *mf*

Bsn. *mf*

E♭ Cl. *mf*

1 Cl. *mf*

2 Cl. *mf*

3 Cl. *mf*

A. Cl. *mf*

B. Cl. *mf*

1 A. Sax. *mf*

2 A. Sax. *mf*

T. Sax. *mf*

B. Sax. *mf*

1 Trp.

2&3 Trps.

1&2 Hrns. *mf*

3&4 Hrns. *mf*

1&2 Trbs. *mf*

3 Trb. *mf*

Euph. *mf*

Tuba *mf*

C. B. *mf*

P. *mf*

Xylo. *mf*

Picc.

1&2 Fls.

Ob.

Bsn.

E♭ Cl.

1 Cl.

2 Cl.

3 Cl.

A.Cl.

B.Cl.

1 A.Sax.

2 A.Sax.

T.Sax.

B.Sax.

1 Trp.

2&3 Trps.

1&2 Hrns.

3&4 Hrns.

1&2 Trbs.

3 Trb.

Euph.

Tuba

C.B.

P.

Xylo.

F

mf

68

Picc.

1&2 Fls.

Ob.

Bsn.

Eb Cl.

1 Cl.

2 Cl.

3 Cl.

A.Cl.

B.Cl.

1 A.Sax.

2 A.Sax.

T.Sax.

B.Sax.

1 Trp.

2&3 Trps.

1&2 Hrns.

3&4 Hrns.

1&2 Trbs.

3 Trb.

Euph.

Tuba

C.

p.

Xylo.

SAMPLE

74 **G**

Picc.

1&2 Fls. *mp*

Ob. *p*

Bsn. *p*

E♭ Cl. *p*

1 Cl. *p*

2 Cl. *p*

3 Cl. *p*

A.Cl. *p*

B.Cl. *p*

1 A.Sax. *p*

2 A.Sax.

T.Sax.

B.Sax.

1 Trp.

2&3 Trps.

1&2 Hrn. *p*

3&4 Hrn. *p*

1&2 Trbs.

3 Trb.

Euph. *p*

Tuba

C. *p*

G

Xylo.

81 **D.S. to $\text{\textcircled{D}}$** **$\text{\textcircled{Coda}}$**

Picc. *f*

1&2 Fls. *f*

Ob. *mp* *f*

Bsn. *mp*

E♭ Cl. *mp* *f*

1 Cl. *mp* *f*

2 Cl. *mp*

3 Cl. *mp*

A.Cl. *mp*

B.Cl. *mp*

1 A.Sax. *mp*

2 A.Sax. *p* *f*

T.Sax. *p* *mp*

B.Sax. *p* *mp*

1 Trp. *f*

2&3 Trps. *f*

1&2 Hrns. *mp*

3&4 Hrns. *mp*

1&2 Trbs. *mp*

3 Trb. *mp*

Euph. *mp*

Tuba *mp*

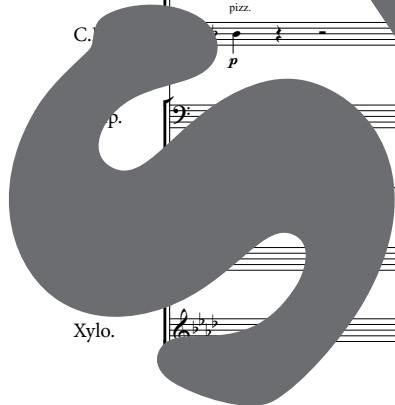
C. *pizz.* *p* *arco* *mp*

D.S. to $\text{\textcircled{D}}$ **$\text{\textcircled{Coda}}$**

mp *f*

$\text{\textcircled{Coda}}$

Xylo. *f*



87 **H**

Picc.

1&2 Fls.

Ob.

Bsn.

E♭ Cl.

1 Cl.

2 Cl.

3 Cl.

A.Cl.

B.Cl.

1 A.Sax.

2 A.Sax.

T.Sax.

B.Sax.

1 Trp. *Solo* **H**

2&3 Trps.

1&2 Hrns.

3&4 Hrns.

1&2 Trbs.

3 Trb.

Euph.

Tuba

C.B.

H

Xylo.